

# 2017 DISTRICT OVERVIEW

## SAN BERNARDINO CITY UNIFIED SCHOOL DISTRICT



**50**  
ELEMENTARY

**11**  
MIDDLE

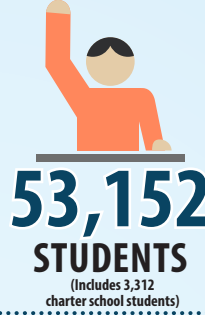
**10**  
HIGH

**1**  
ADULT

**2**  
ALTERNATIVE PROGRAMS

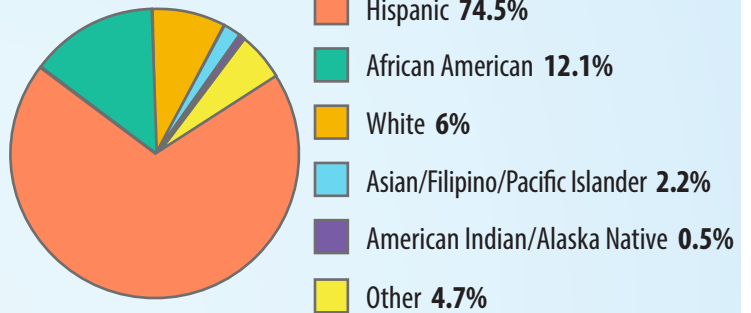
**12**  
CHARTER SCHOOLS

### 2016-17-DEMOGRAPHICS



Socioeconomic.....	<b>88.5%</b>
English Learners.....	<b>27.3%</b>
Special Education.....	<b>11%</b>
Homeless.....	<b>8.3%</b>
Foster.....	<b>0.9%</b>
Charter Schools.....	<b>6.2%</b>

### 2016-17-STUDENT ETHNICITY



### AWARDS



**16**  
California Distinguished Schools



**1**  
National Center for Urban School Transformation (NCUST) School



**3**  
National Blue Ribbon Schools



**2**  
Schools to Watch



**1**  
California Gold Ribbon School

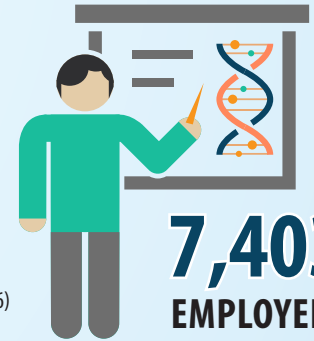
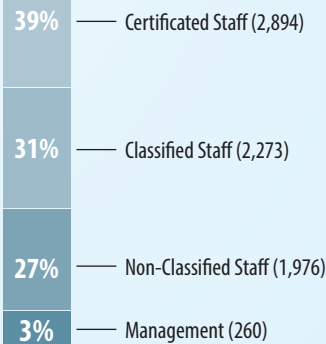


College Board Gaston Caperton Opportunity Award

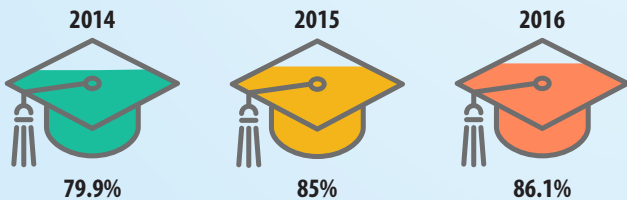
### 7 Golden Bell Award-Winning Programs

- SANKOFA
- Customer Service
- BE STILL (Be Extra Stable to Increase Lifelong Learning)
- Cal-SAFE for Teen Parents (California School-Age Families Education Program)
- City of Readers
- Middle College High School
- San Manuel Partnership

### STAFFING

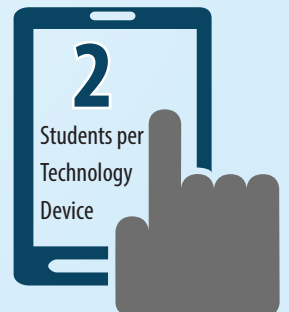


### GRADUATION RATE INCREASING



**\$12,604**  
Spent Annually Per Student

Nationally, California has ranked in overall per pupil spending





## Dual Immersion Program

Ten schools offer a Dual Immersion program. Beginning in kindergarten, students receive instruction and practice in the core curriculum in English and Spanish.

### Dual Immersion Schools

- |                             |                                |
|-----------------------------|--------------------------------|
| 1. Anton Elem. School       | 9. Bonnie Oehl Elem. School    |
| 2. Belvedere Elem. School   | 10. Riley College PREP Academy |
| 3. Brown Elem. School       | 11. Urbita Elem. School        |
| 4. Hillside Elem. School    | 12. Wilson Elem. School        |
| 5. Jones Elem. School       | 13. Bing Wong Elem. School     |
| 6. Lincoln Elem. School     | 14. Arrowview Middle School    |
| 7. Lytle Creek Elem. School | 15. Paakuma' K-8 School        |
| 8. Marshall Elem. School    | 16. San Bernardino High School |



## 2016-17 Career Pathway Student Enrollment

Currently, there are  
**43,108**  
 students  
 (88.1% of the total student population)  
 enrolled in pathways.



## 2016-17 Career Pathway Opportunities



### ARROYO VALLEY HIGH SCHOOL

#### Pathways

- Business & Logistics Academy
- C.O.R.E. Academy\*
- Digital Media Arts Academy\*
- Global Leadership Academy
- Local & National Security Academy
- Teaching Academy
- Visual & Performing Arts Academy



### CAJON HIGH SCHOOL

#### Pathways

- Academy of Arts and Communication Technologies\*
- Academy of Automotive and Construction Technologies\*
- Academy of Medical, Health and Biological Sciences\*
- Academy of Public Policy and Human Services\*



### INDIAN SPRINGS HIGH SCHOOL

#### Pathways

- Health Academy\*
- Manufacturing Academy\*



### MIDDLE COLLEGE HIGH SCHOOL

#### Pathway

- San Bernardino Valley College



### PACIFIC HIGH SCHOOL

#### Pathways

- Academy of Digital Design and Communications\*
- Academy of PLTW Biomedical
- Heavy Diesel (Pilot Program)



### SAN ANDREAS HIGH SCHOOL

#### Pathway

- Growing Hope Academy\*
  - Quake Technology Innovators Pathway
  - Advanced Technology Farming Pathway



### SAN BERNARDINO HIGH SCHOOL

#### Pathways

- Academy of Air Force ROTC
- Academy of E-Business
- Academy of Law and Society
- Academy of PLTW Engineering
- Academy of Public Safety
- Academy of Sports Medicine
- Academy of Visual and Performing Arts



### SAN GORGONIO HIGH SCHOOL

#### Pathways

- NAF Academy of Arts, Media & Entertainment
- NAF Academy of Finance & Business
- NAF Academy of Hospitality & Tourism
- NAF Academy of Information Technology
- NAF/PLTW Academy of Design & Engineering
- NAF/PLTW Academy of Health Science



### SIERRA HIGH SCHOOL

#### Pathways

- Academy of Medical Professions
- Academy of Military Enlistment